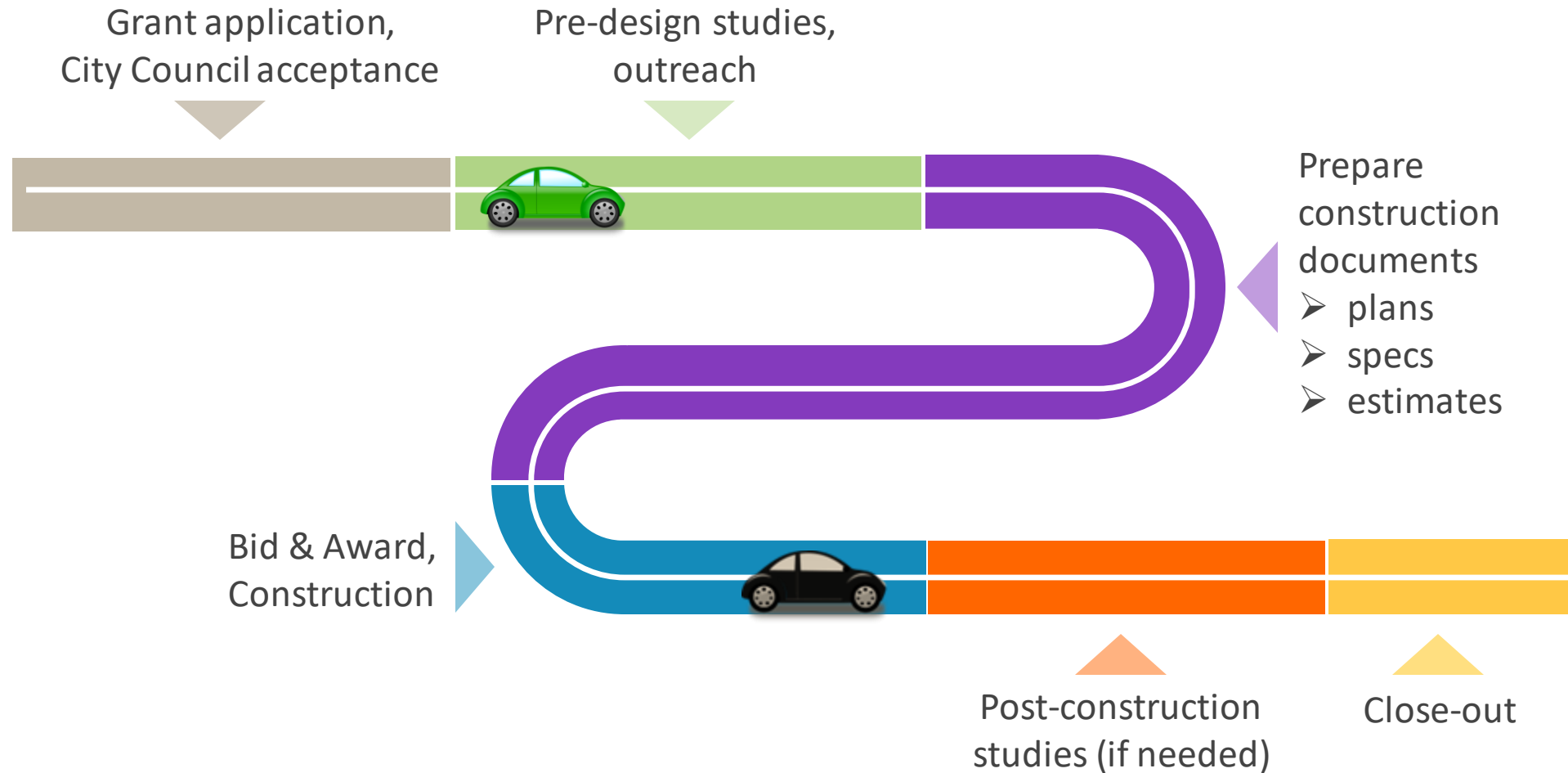


Active Transportation and Vision Zero



Project Delivery Cycle



The Primary Players

Responsibilities

Transportation & Traffic

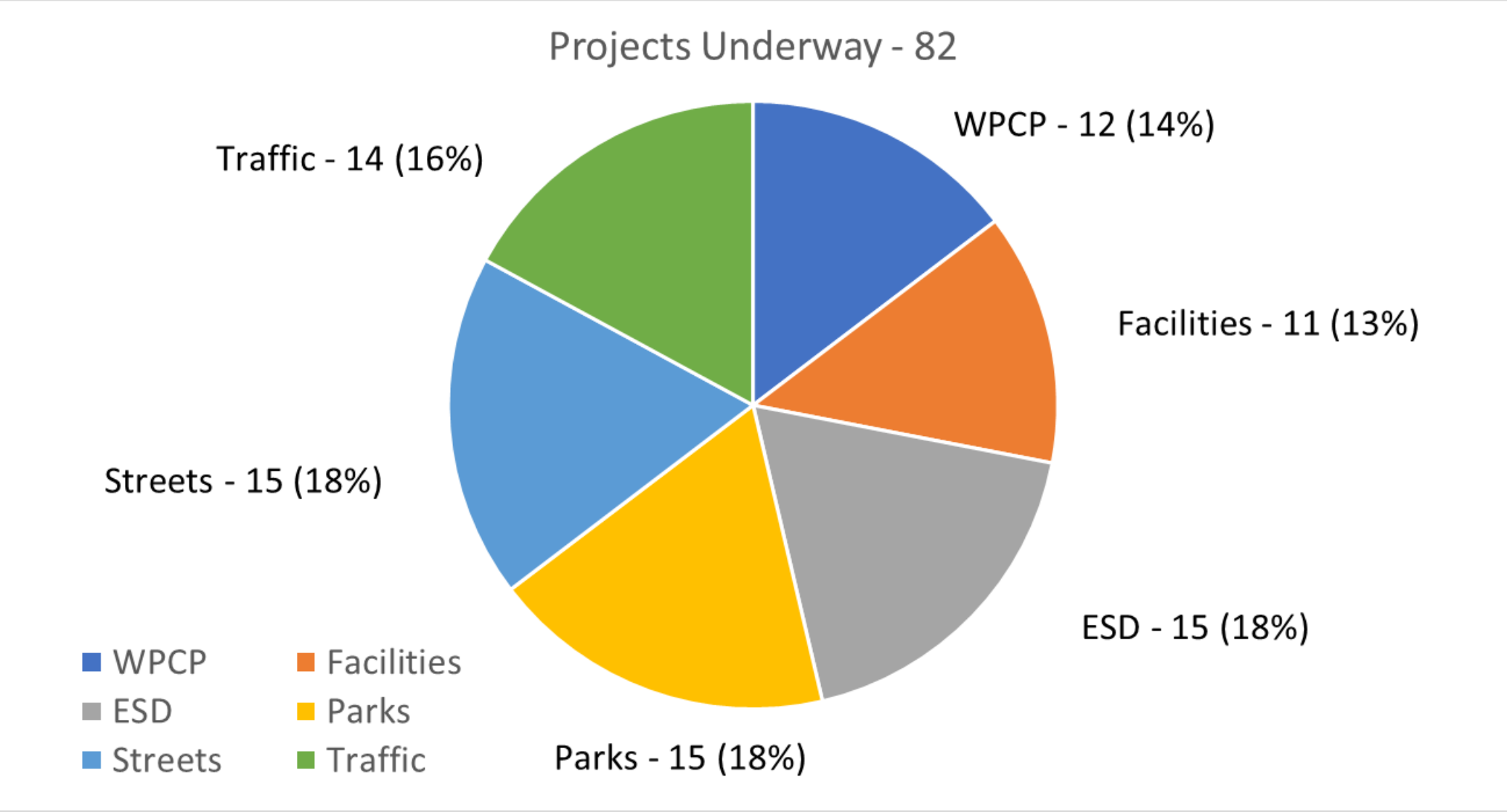
- 9 staff and 1 Term-Limited staff
 - ◆ Engineering Studies
 - ◆ Transportation Planning/TDM
 - ◆ Development Activities
 - ◆ Signal Operations
 - ◆ Public Interaction
 - ◆ Intergovernmental Coordination
 - ◆ Grant Application/Reporting
 - ◆ CIP delivery
 - ◆ BPAC Support

Engineering

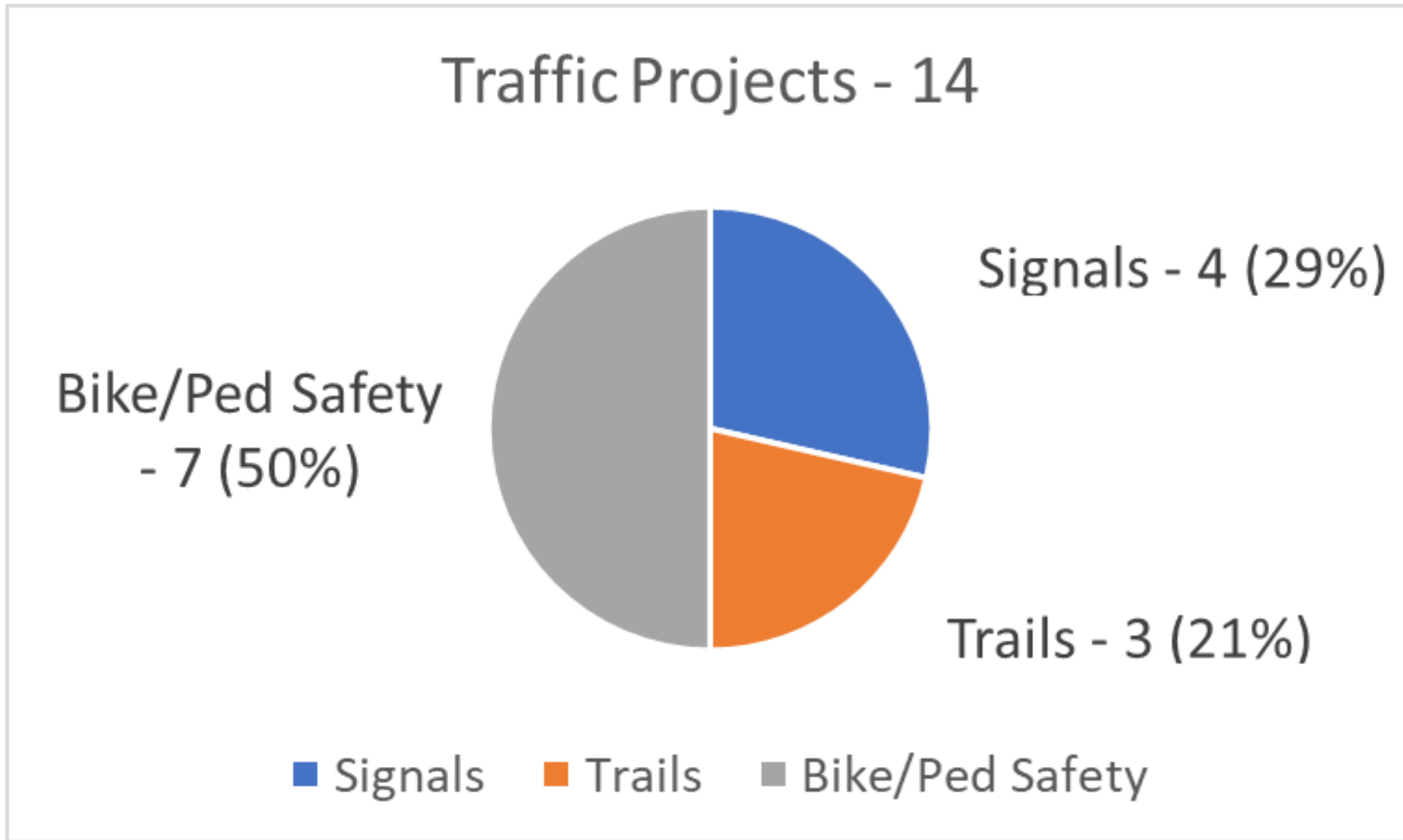
- 18 staff dedicated to CIP delivery City-wide* (small team)
 - ◆ 8 staff to deliver design
 - ◆ 8 staff to manage construction
- Currently managing 82 projects

* Not including Special Projects Team

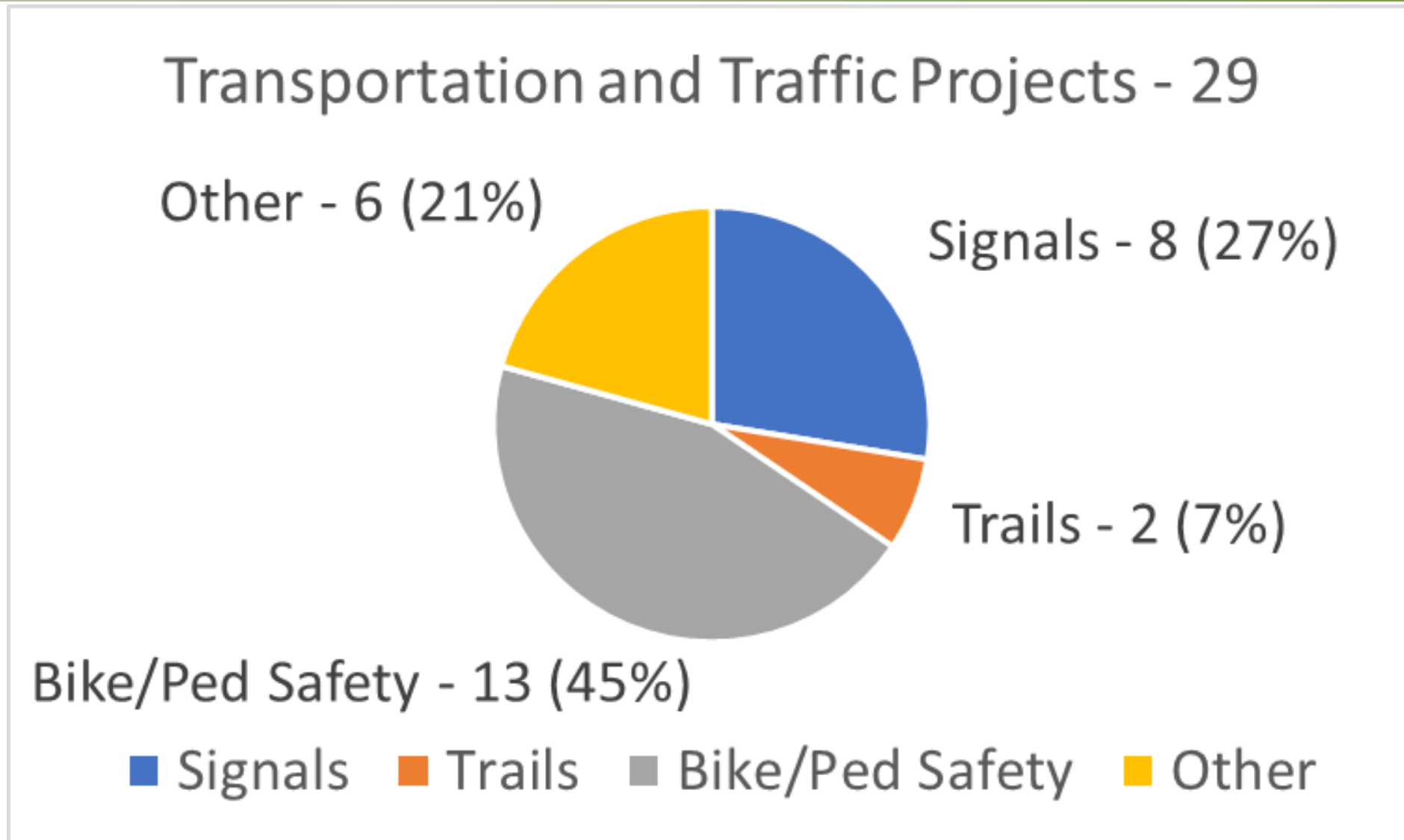
Current Design and Construction Workload FY2023/24 (PAS Managed)



Current Design and Construction Workload FY2023/24 (PAS Managed)

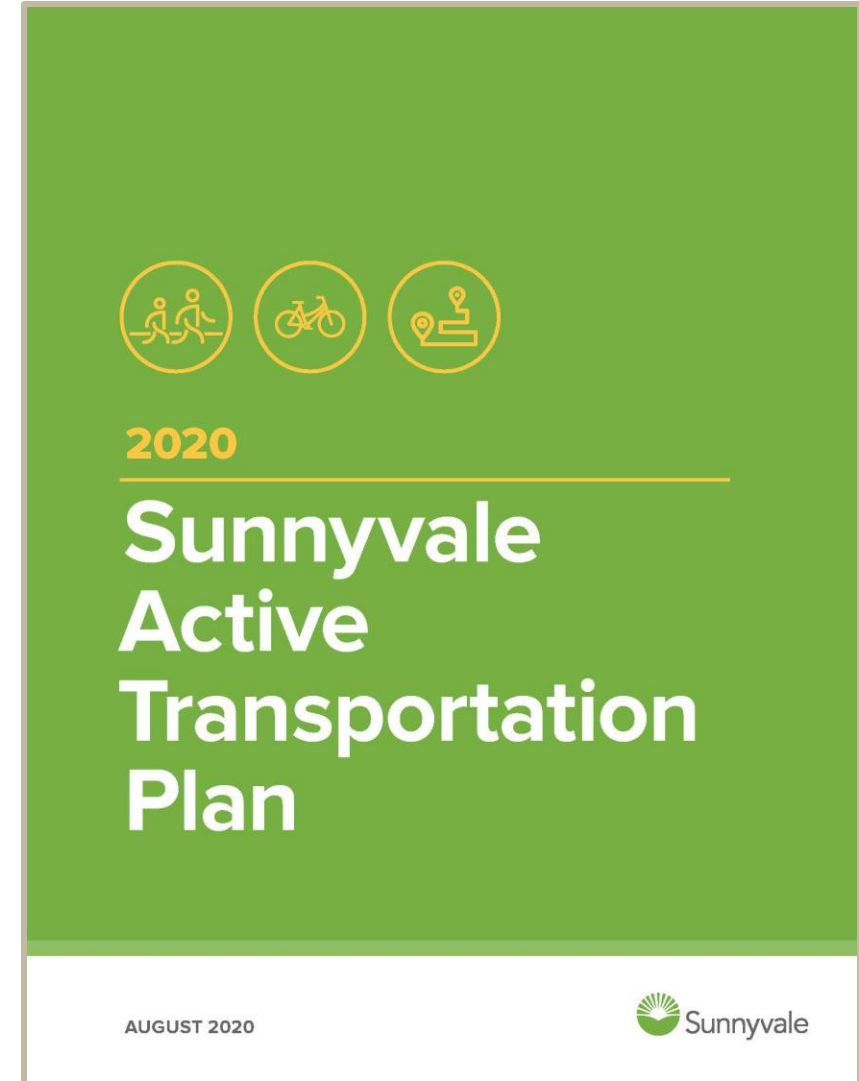


Current Planning, Design and Construction Workload FY2023/24 (Transportation and Traffic Managed)



Active Transportation Plan Adoption

- Adopted by City Council on August 25, 2020
- Serve as **overall guidance for City Council** to consider for implementation of bicycle, pedestrian and Safe Routes To School (SRTS) improvements
- **Perform studies** where trade-offs are needed
- Conduct additional **community outreach** as part of implementation process



Active Transportation Plan Purpose

- Continue to **evaluate opportunities** through area plan and specific plan efforts
- Leverage capital budget with **external grant sources**
- Design and build projects as **funding** allows
- **Monitor** performance metrics



Benefits of the ATP

- Cohesive and coordinated document for bicycle, pedestrian and safe routes to school improvements
- Identifies facilities that need further study
- Quick build and permanent improvements identified
- Facility and spot improvements can be tailored to available funding sources



Bike and Ped Projects Funding Opportunities

Local/Regional

- Transportation Development Act (TDA)
- Transportation Fund for Clean Air (TFCA)
- 2016 Measure B (Bike & Ped)
- Water District
- Valley Transportation Authority (VTA)
- Metropolitan Transportation Commission (MTC)
- Developer/Voluntary Contribution



Bike and Ped Projects Funding Opportunities

State/Federal

- Caltrans Sustainable Communities Transportation Planning Grant
- One Bay Area Grant (OBAG)
- Highway Safety Improvement Program (HSIP)
- Active Transportation Program
- Safe Routes to School (SR2S/SRTS)
- Priority Legislative Budget Projects



Proposed Bikeway Improvements 2020 Construction Costs from ATP

Bikeway Type	Proposed Mileage	Cost Estimate Low	Cost Estimate High
Class I Shared-Use Path	18.8	\$13,160,000	\$28,200,000
Class II Bicycle Lane	7.9	\$1,042,800	\$3,057,300
Class IIB Buffered Bicycle Lane	11.5	\$197,800	\$4,830,000
Class III Bicycle Route	12.7	\$195,580	\$326,390
Class IIIB Bicycle Boulevard	22.2	\$1,665,000	\$22,644,000
Class IV Separated Bikeway	17.1	\$5,130,000	\$39,552,300
Total*	90.2	\$21,391,180	\$98,609,990

*Total does not include design costs or maintenance costs

ATP Bikeway Mileage

Bikeway Type	Existing in 2020	Proposed per Adopted 2020 ATP	Implemented Since 2020 ATP Adoption	% Remaining
Class I Shared-Use Path	18.0	18.8	1.0	95%
Class II Bicycle Lane	54.3	7.9	1.7	78%
Class IIB Buffered Bicycle Lane	4.1	11.5	10.6	7%
Class III Bicycle Route	13.0	12.7	1.3	90%
Class IIIB Bicycle Boulevard	0.0	22.2	18.8	15%
Class IV Separated Bikeway	0.4	17.1	0.8	95%
TOTAL	89.8	90.2	34.2	62%

Units: Miles

Proposed Pedestrian Improvements Implementation Prioritization

- All improvements are spot improvements (ADA curb ramps/curb extensions/crossing, etc.)
- Prioritization Criteria
 - ◆ Collision Reduction
 - ◆ Equity
 - ◆ Access to Key Destinations
 - ◆ Community-Identified Need
 - ◆ Part of Safe Routes to School Network

Priority	Type	Projects
High Priority	Spot	32
Medium Priority	Spot	120
Low Priority	Spot	36

Proposed Safe Routes to School Improvements Construction Costs

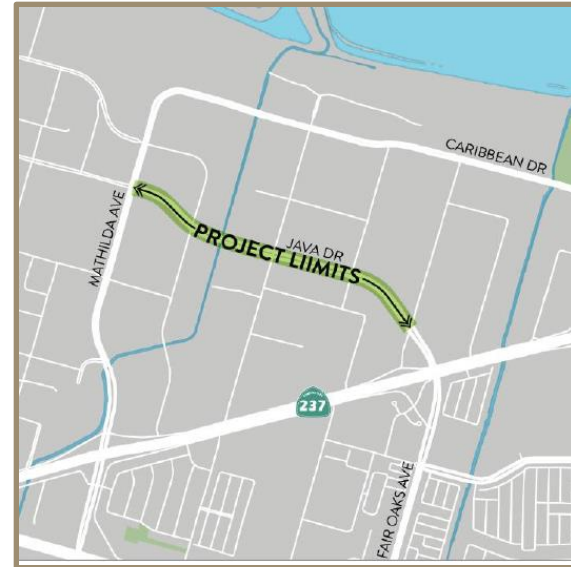
Implementation Packages

Prioritization Type	Low	High
Cost Prioritization High Visibility Crosswalks, Red Curb Paint, Signage, Striping, etc.	\$123,100	\$216,600
Equity Prioritization Columbia Middle School & Braly Elementary School	\$1.4 M	\$8.3 M
Safety Prioritization Peterson Middle School & Fremont High School	\$1.6 M	\$8.0 M
All SRTS Improvements At 21 public schools	\$17.8 M	\$97.2 M

*Does not include design costs or maintenance costs

Completed ATP Projects Since 2020

- **Lawrence Station Area Sidewalks and Bicycle Facilities**
 - ◆ Willow Avenue Class IIB Buffered Bike Lane
 - ◆ Evelyn Avenue/Reed Avenue Curb Extension
- **Java Dr. Road Diet and Bike Lanes**
 - ◆ Crossman Avenue to Mathilda Avenue
 - ◆ Class IIB Buffered Bike Lane



Java Drive Road Diet and Bike Lanes Project Limits

Completed ATP Projects Since 2020

- **Homestead Road Full Time Bicycle Lane Study**
- **Homestead Rd. Pedestrian/Bicycle Improvements near Homestead High School**
 - ◆ Pedestrian Scramble Zone
 - ◆ Curb Extensions
 - ◆ ADA Improvements
 - ◆ Green Bike Lane



Completed ATP Projects Since 2020

- **Pedestrian & Bicycle Safety Improvements at Fremont Ave./Manet Dr./Bobwhite Ave.**
 - ◆ Leading Pedestrian Interval
 - ◆ Curb Extensions
 - ◆ ADA Improvements
 - ◆ High Visibility Crosswalks



Completed ATP Projects Since 2020 (Voluntary Contribution)

- **GreenLink on Gibraltar Drive**
(Google)
 - ◆ Class IV Bike and Ped facility
- **Maude Avenue Bicycle Improvements**
(LinkedIn)
 - ◆ Class IIB Buffered Bike Lane between Mountain View City Limits and Mathilda Avenue



Gibraltar Drive – Class IV Separated Bikeway

Completed ATP Projects Since 2020 (Voluntary Contribution)

- **Moffett Park Complete Streets Signing and Striping (Google)**
 - ◆ Class IIB Bike Lanes
 - ◆ Shoulder stripes
 - ◆ Double yellow centerlines
 - ◆ Pedestrian improvements



Improvements on Baltic Way

Active ATP Projects

- **Stevens Creek Trail Extension**

- ◆ Dale Avenue/Heatherstone Way to E. Remington Avenue/Mountain View High School
- ◆ E. Remington Avenue to Fremont Avenue

- **Bernardo Avenue Bike/
Pedestrian Undercrossing**



Active ATP Projects

- **Pedestrian & SRTS Improvements in SNAIL and Braly Corners**

- ◆ Curb Extensions
- ◆ ADA Improvements
- ◆ High Visibility Crosswalks



Bulb Outs and Curb Extensions

- **Lakewood Safe Routes to School**

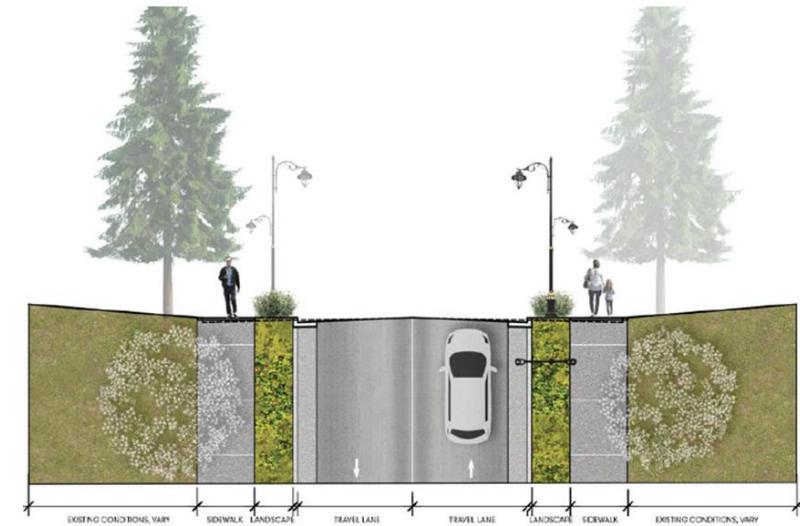
- ◆ Curb Extensions
- ◆ ADA Improvements
- ◆ High Visibility Crosswalks
- ◆ Green Stormwater Infrastructure



High Visibility Crosswalk with Advance Stop or Yield Sign

Active ATP Projects

- **Peery Park Area Transportation Improvements**
 - ◆ Potrero Avenue from Central Expressway to Maude Avenue
 - ◆ Reduced Corner Radius
 - ◆ Sidewalks & streetscape improvements
- **3 Traffic Signal Reconstruction**
 - ◆ Reduced Corner Radius
 - ◆ Protected Left Turns/LPI



Proposed Cross Section on
Potrero Avenue

Active ATP Projects

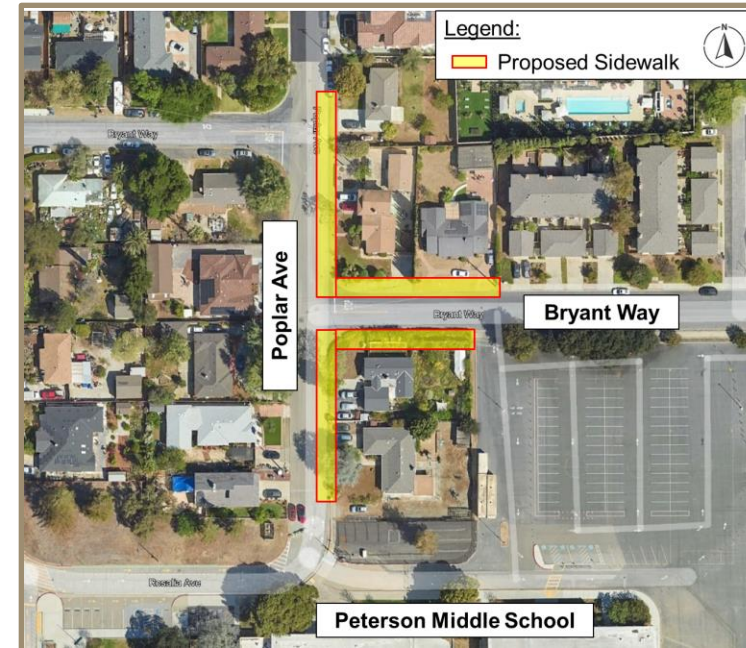
- **Caribbean Dr. Class I Shared-use Path (along development frontages)**
 - ◆ Mathilda Avenue to Borregas Avenue
 - ◆ Twin Creeks to Moffett Park Drive
- **Bicycle Improvement Planning Study**
 - ◆ SB Mathilda Avenue from Ahwanee Avenue/Almanor Avenue to Maude Avenue



Under Construction

Active ATP Projects

- **Sunnyvale Bicycle, Pedestrian and SRTS Quickbuild Safety Improvements**
- **Poplar Sidewalk Improvements – Design Only**
 - ◆ El Camino Real to Rosalia Ave.
 - ◆ Eastside of Poplar Ave.



Active ATP Projects

- **East and West Channels Trail Construction**
 - ◆ North of SR 237
 - ◆ Paving of Valley Water's Maintenance Road
- **East Channel Trail Master Plan**
 - ◆ Bay Trail to Homestead Road
 - ◆ Freeway/Street crossings
 - ◆ Trail Alignment

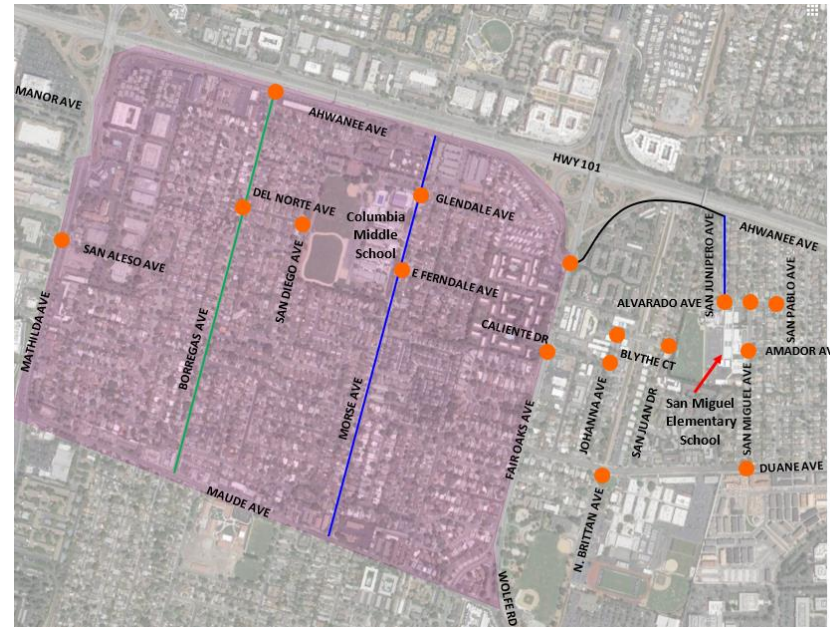


East Channel Trail Proposed Alignment

Active ATP Projects

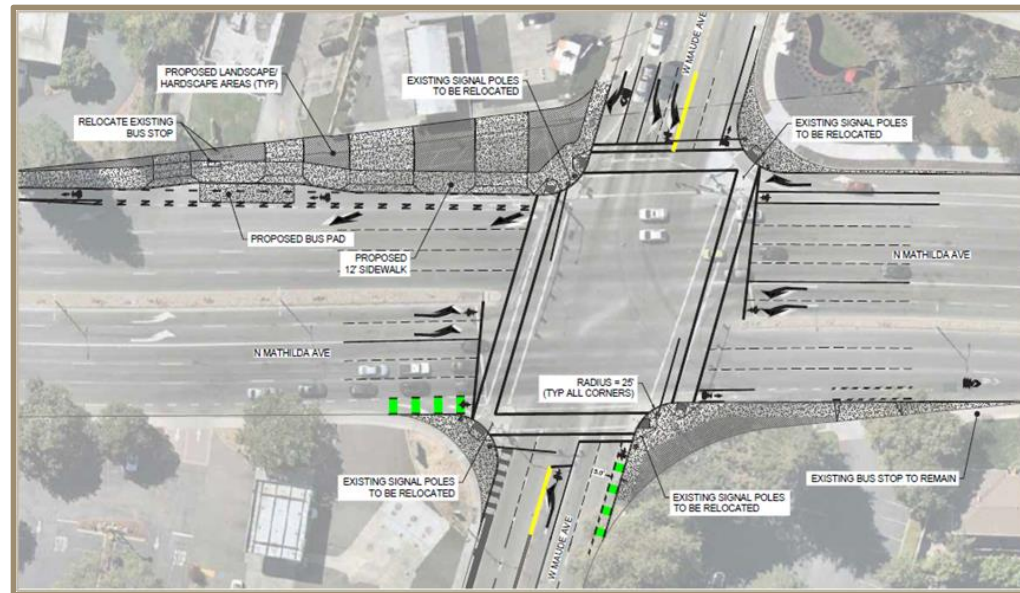
- **SNAIL Neighborhood Improvements**

- ◆ SRTS Improvements at Columbia Middle School & San Miguel Elementary School
- ◆ Crosswalk Improvements
 - HAWK Beacons, Raised Crosswalks, High Visibility Crosswalks, Curb Ramps, Curb Extensions
- ◆ Bicycle Network Improvements on Borregas, Morse, Ahwanee and San Junipero Avenues



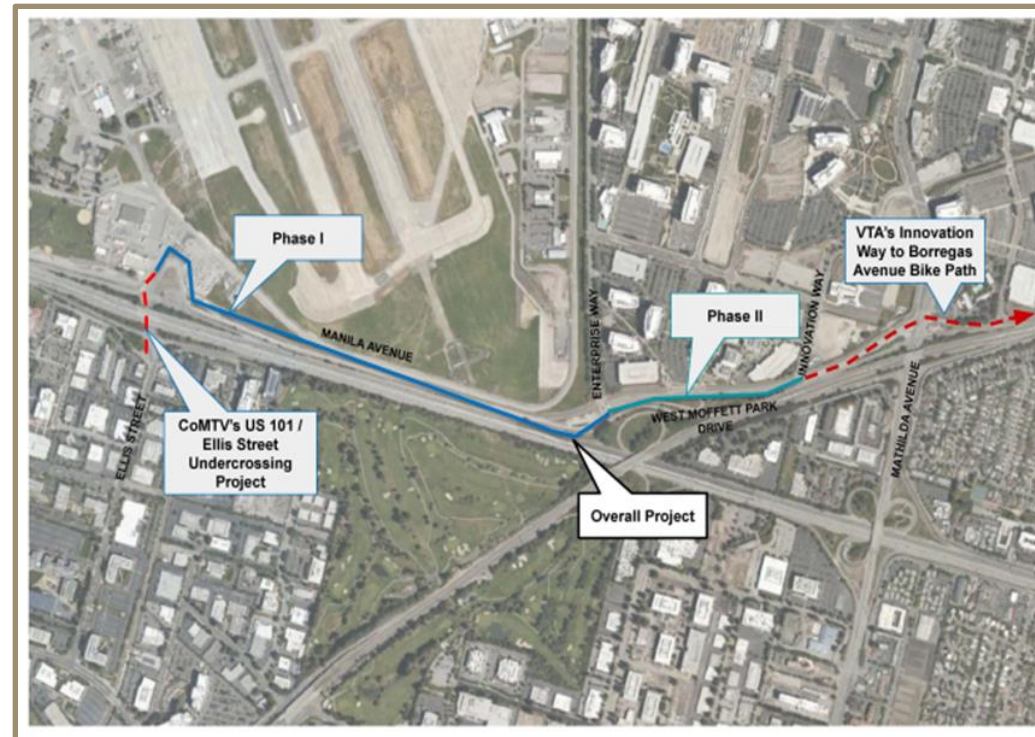
Active ATP Projects

- **Sunnyvale Safe Routes to School Improvements at Bishop Elementary School**
 - ◆ Class IIB Bicycle Lane on Sunnyvale Avenue
 - ◆ Removal of Slip Lanes at Maude Avenue/Borregas Avenue and Maude Avenue/Mathilda Avenue



Active ATP Projects (Voluntary Contribution)

- **Manila Drive/Moffett Park Drive Class I Shared-use Path (Google)**
 - ◆ Class I Bike/Ped facility between Ellis Street to Innovation Way



Summary of Active Design and Construction Projects FY23-24 (Project Admin. Section)

Projects	Costs
Peery Park Area Transportation Improvements	\$4,194,000
Sunnyvale SNAIL Neighborhood Improvements	\$6,051,000
Sunnyvale Safe Routes to School Improvements	\$3,546,000
East Sunnyvale Area Transportation Improvements	\$3,950,400
New Traffic Signal at Wolfe/Dartshire	\$1,260,000
Stevens Creek Trail – Remington to Fremont	\$4,000,000
Evelyn Avenue Multi-Use Trail	\$4,100,000
Ped & SRTS Improvements in SNAIL and Braly Corners	\$1,000,000
3 Traffic Signal Reconstruction	\$3,060,600
East and West Channel Trail Construction	\$500,000
Traffic Signal Hardware & Wiring at Fair Oaks/California and Bernardo/Heatherstone	\$2,444,000
ATP – Safe Routes to School	\$3,274,000
Dilemma Zone Detection – Phase 2	\$1,297,000
Lakewood Safe Routes to School	\$1,750,000
14 Projects	\$40,427,000

Summary of Active Planning, Design and Construction Projects FY23-24 (Traffic Division)

Projects	Costs
Bernardo Avenue Undercrossing	\$22,300,000
Caltrain Grade Separation at Mary Avenue	\$25,000,000
Stevens Creek Trail – Dale/Heatherstone to Remington	\$6,000,000
East Channel Trail Master Plan	\$2,830,000
Manila Dr./Moffett Park Dr. Bike/Ped Trail	\$2,575,800
Sunnyvale Bicycle, Ped and SRTS Quickbuild Safety Impr.	\$2,089,900
Homestead Road Safe Routes to School (Lead Agency – VTA)	\$1,052,900
Improve Bike & Ped Access at Sunnyvale Caltrain Station	\$433,100
Bike and Ped Education & Encouragement Program	\$292,800
Pedestrian and Bicycle Facility Installation on Tasman Dr.	\$273,200
Bike Lanes on Hollenbeck Ave.	\$175,000
Mary Avenue Overcrossing EIR	\$164,000
Bicycle Improvement Planning Study – SB Mathilda Ave.	\$150,000
Pedestrian/Bicycle Pathway Spot Improvements	\$155,000
Bike Rack Installation Program In Commercial Areas	\$16,800

Summary of Active Planning, Design and Construction Projects FY23-24 (Traffic Division) (cont'd)

Projects	Costs
Traffic Signal Controller Replacement	\$1,371,300
Pedestrian Lighted Crosswalk Maintenance and Replacement	\$1,398,100
Traffic Sign Installation and Maintenance	\$207,000
Fremont Avenue Traffic Signals Retiming	\$350,000
Hollenbeck Avenue Traffic Signals Retiming	\$150,000
Mary Avenue Traffic Signals Retiming	\$145,500
Remington Drive Traffic Signals Retiming	\$146,500
Moffett Park Drive/Innovation Way Corridor Retiming	\$492,700
Illuminated Street Sign Replacement Project	\$325,100
Peery Park Rides Shuttle Program	\$500,000
Re-evaluate Traffic Calming Program and Policy	\$200,000
Street Name Sign Replacements	\$244,000
Alt. Transportation Opt. for Fremont & Homestead High School Students	\$150,000
Bicycle and Pedestrian Collision Investigation Pilot Program	\$60,000
29 Projects	\$69,248,700

Summary of Active Planning, Design and Construction Projects FY23-24

Total Active Projects between PAS Section and Transportation Division

43 Projects

\$109,675,700



Future Projects

CIP 836200 Bicycle Improvement Planning Study

- ◆ \$150k to \$300k every 3 years for planning studies identified in ATP
 - SB Mathilda Road Diet
 - EB Reed Avenue Road Diet
 - Fremont Avenue Road Diet

Transportation Impact Fee

- ◆ Funded by new development projected over life of fee
 - \$5M for bike network
 - \$2.5M for pedestrian improvements
 - \$9.8M for sidewalks

Conclusion

- Strategy to leverage grant funds to maximize City funds
- Staff has been successful in obtaining grants
- ATP will provide flexibility with grant opportunities and Public-Private Partnerships
- To Accelerate delivery of ATP
 - ◆ Additional City funding
 - ◆ Additional staffing resources for DPW (Engineering and Transportation Divisions) and Purchasing

Questions for Discussion

- Continue with strategy of using primarily grant funds to leverage City funds to build ATP projects?
- Should we consider supplementing existing funds and staffing resources to increase the number of ATP projects being implemented?

Council
Questions &
Discussion



Sunnyvale